



Altech[®] FENNOAQUA

Alltech Fennoaqua Ltd

Alltech[®] FENNOAQUA

Fish feed is the heart of our business

Our contribution to the journey of fish to the table is the high-quality fish feeds we have developed and our innovative feeding solutions that can be customised as necessary.

Our roots lie in the coastal landscape of Southwest Finland, but we serve all countries in the world that raise cold-water fish species with either traditional methods or recirculating aquaculture systems (RAS).

By doing our jobs well, we are able to do our part in helping fish farmers produce healthy food sustainably, efficiently and profitably, while promoting animal welfare and respecting the environment.

We feed many kinds of successes.

Forefront developer and manufacturer of environmentally friendly feeds

High-quality feeds in terms of both content and exterior quality for achieving the best farming results.

Outside of the fish feed season, we also manufacture pet food.



GROWTH SONAR

Online ERP system

- Access information about your fish stock and cage conditions wherever you go
- Continuous monitoring of feed and its consumption
- Comprises two parts: a cloud service's computer application and a mobile application

Growth Sonar can also be connected to an AquaControl control unit

- Feeding control unit
- Online video camera
- Oxygen sensor
- Temperature sensor
- Feed level sensor for silos



Alltech Fennoaqua's fish feeds

Alltech® FENNOAQUA

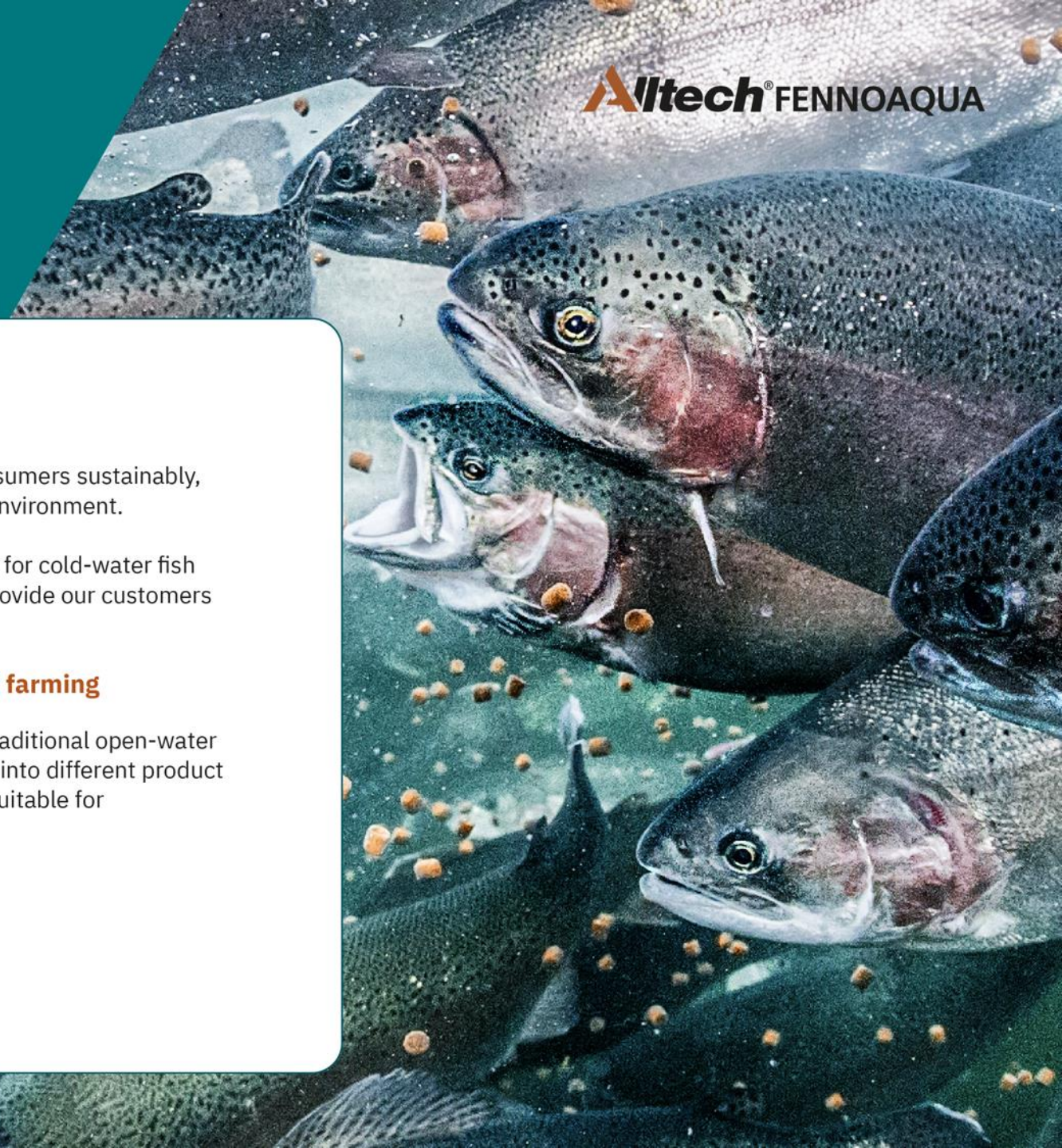
Specialist in feeding

Alltech Fennoaqua helps its fish farm customers produce healthy food for consumers sustainably, efficiently and profitably, while promoting animal welfare and respecting the environment.

At the heart of our operations is our strong expertise in feeding that is suitable for cold-water fish species, as well as our innovative and ecological top feeds. They allow us to provide our customers with competitive advantages and added value – to feed success.

Fish feeds made from Finnish raw materials for open-water and RAS farming

Fennoaqua manufactures fish feeds primarily from Finnish raw materials for traditional open-water aquaculture and recirculating aquaculture systems. Our products are grouped into different product lines according to the fish species and farming method. All our fish feeds are suitable for ASC-certified aquaculture.



Optimised nutrition

The nutritional content of our feeds is optimised to meet the needs of fish of different sizes. The raw materials used primarily consist of fish meal made of Finnish MSC-certified Baltic herring and European sprat as well as various plant proteins, such as responsibly produced non-GMO soy protein and Finnish broad beans.

Baltic Blend®: Responsible choice for fish farming and the Baltic Sea

All our feeds are Baltic Blend® feeds. They considerably reduce the nitrogen load from fish farming, recycle nutrients and remove phosphorus from the Baltic Sea.

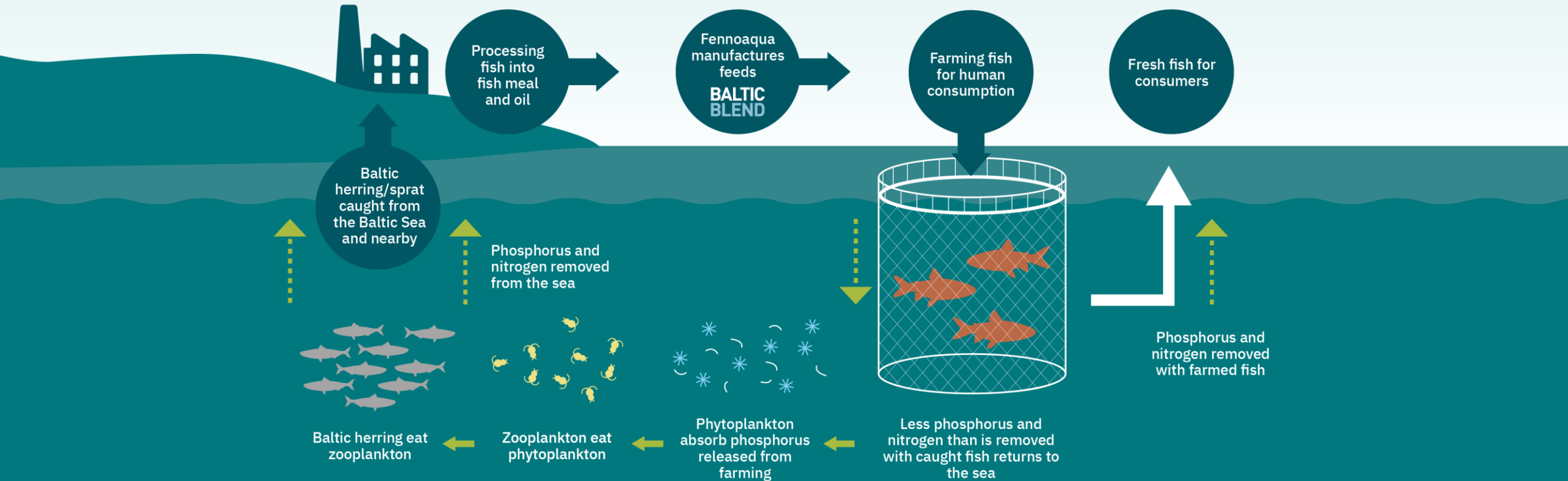
In our feeds, the phosphorus contained in plant proteins is converted into a digestible form for fish with the help of the phytase enzyme. This has also helped reduce the phosphorus load from fish farming considerably.

Hercules Baltic Opti: The key to cardiovascular health in the final phase of farming

In the final phase of farming, the EPA and DHA fatty acids in the fish are increased to levels beneficial for human cardiovascular health with Hercules Baltic Opti feeds.


Baltic Blend® fish feed

The Baltic Blend® trademark indicates that purified fish meal and oil made from Baltic Sea fish are used as the raw materials in our fish feeds. Each kilo of fish farmed with Baltic Blend feed recycles the nutrients in the Baltic Sea and even removes phosphorus. This has helped reduce the nitrogen load from fish farming by 75%. Indeed, Baltic Blend is an excellent example of circular economy at a local level. Marine raw materials from sustainably caught fish stocks naturally meet the nutritional requirements of fish. All our rainbow trout feeds are Baltic Blend feeds.



Baltic Blend feeds mitigate eutrophication of the Baltic Sea


Baltic Blend feeds are manufactured from raw materials sourced from the Baltic Sea. The amount of phosphorus removed from the sea with the Baltic herring and European sprat caught for manufacturing fish meal is actually more than the amount produced by fish farming. This also reduces the nitrogen load caused by the operations.




Phosphorus is a necessary nutrient for marine life, but in excessive amounts it causes eutrophication of natural waters.



About 15 million kg of fish is farmed in Finland annually.



Catching the Baltic herring and European sprat used for Baltic Blend feeds removes 18,000 kg more phosphorus per year from the Baltic Sea than is produced by fish farming.



This amount is equivalent to the annual phosphorus emissions from the treated wastewater of Vantaa or another city with a population of 225,000, for example.

Alltech Fennoaqua's rainbow trout feeds



Starter feeds

- Advance 0,2 - 0,3*
- Top 0,3 - 1*



Fry feeds

- Hercules Vital Plus 1,2 - 2,5

RAS feeds

- Circuit Vital 1,2 - 1,7
- Circuit Crystal 2,0



Grower feeds

- Hercules Vital 3,5 - 7
- Hercules Baltic 5 - 7
- Hercules Baltic Opti 7
- Hercules Omega 7
- Hercules EX 3,5 - 7

RAS feeds

- Crystal Astax 3,0 - 4,5
- Hercules 3,5 - 7 EXR



Broodstock feeds

- Ova Vital 2,5 - 9

Alltech Fennoaqua's whitefish feeds



Starter feeds

- Advance 0,2 - 0,3*
- Top 0,3 - 1*



Grower feeds

- Hercules Vital Plus 1,2
- Silver Vital Opti 1,7
- Silver Vital Opti 2,5
- Silver Vital Opti 3,5
- Silver Vital Opti 5



Broodstock feeds

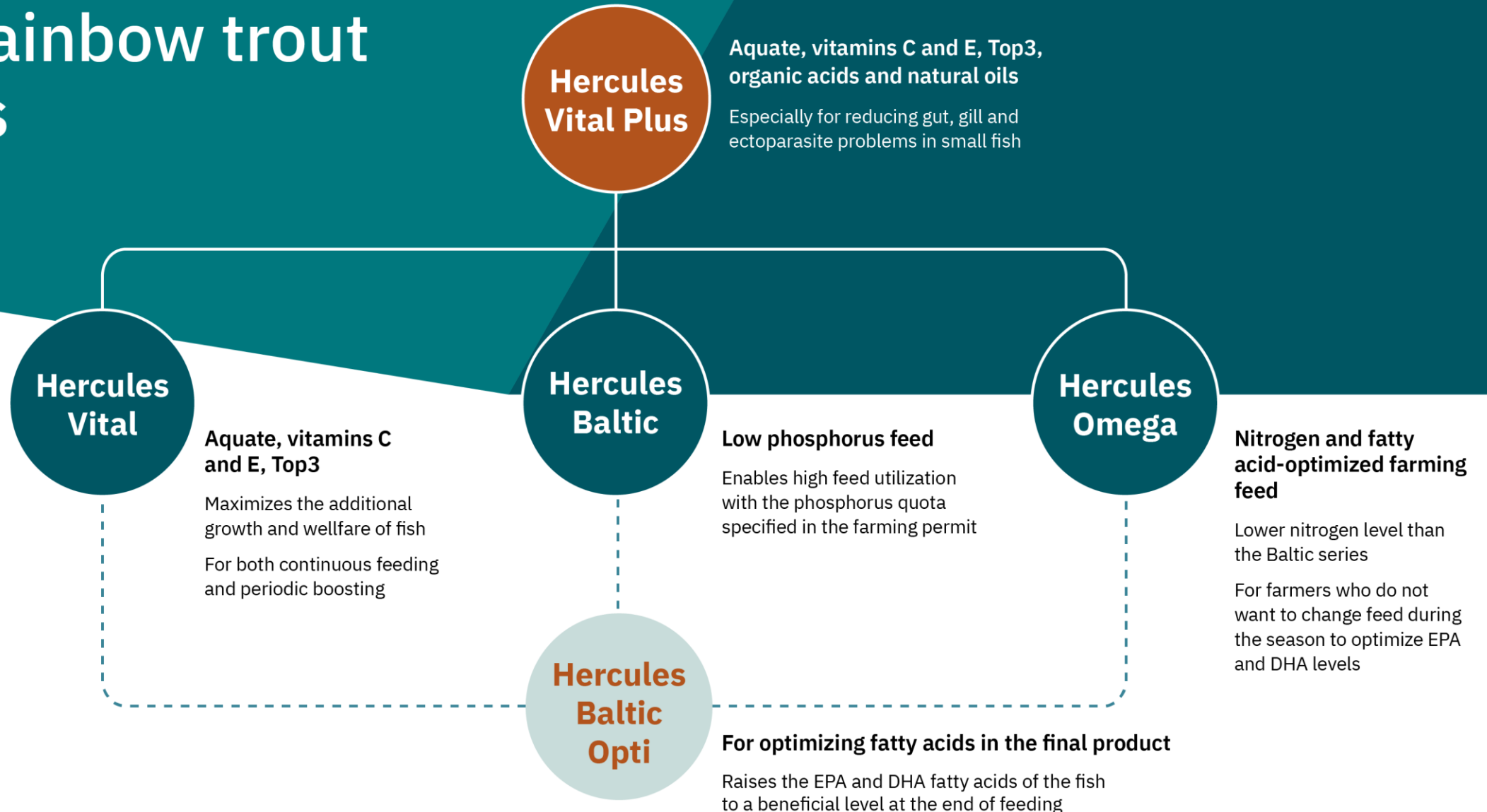
- Ova Vital 2,5
- Ova Vital 3,5
- Ova Vital 5
- Ova Vital 7
- Ova Vital 9



RAS feeds

- Circuit Vital 1,2
- Circuit Vital 1,7
- Circuit Silver Opti 2,5
- Circuit Silver Opti 3,5

Value-added packages for Rainbow trout feeds



Vital

ADDED VALUE PACKAGE

Alltech® FENNOAQUA

The Vital added value package maximizes the additional growth and well-being of the fish and at the same time the income from the fish. The package includes the Aquate premix, higher vitamin C and E concentrations and the Top3 well-being package.



The innovative Aquate premix

- Supports the immune response.
- Optimizes the functioning of the digestive tract by lengthening the intestinal villi. As a result, the fish grows better.
- Improves the function of the fish's mucus layer.



Vitamin C and E concentrations higher than normal growing feeds

- Both vitamins are effective antioxidants.
- Fat-soluble vitamin E is stored in cell membranes, where it protects cells from oxidation.
- Water-soluble vitamin C protects the cell from oxidation inside the cell (cytoplasm).
- Vitamin C enhances the utilization of vitamin E by regenerating already oxidized vitamin E.
- Both vitamins stimulate the fish's immune system.



Top3 wellness package

- Enhances the antimicrobial effect of organic acids and the effect of phytochemicals against gram-negative bacteria.
- Reduces the fish's risk of falling ill with common bacterial diseases caused by gram-negative bacteria.
- Improves growth and maximizes returns.

The ingredients contained in the package work as follows:

- Permeabilizer opens the cell wall of gram-negative bacteria, allowing the active ingredients to enter the bacterial cell.
- The organic acid enters the bacterial cell through the opening opened by the Permeabilizer and destabilizes the cell's normal pH by lowering it.
- Cinnamon oil prevents the division of bacteria.

BIO-MOS®

is a mannan-oligosaccharide, which is known to bind and drain opportunistic bacteria. This can result in a significant improvement of the intestinal flora. Additionally, it can improve the structure and length of the microvilli in the gut through which the nutrient intake can increase. **BIO-MOS®** contributes to mucous barrier protection.

ACTIGEN®

is derived from yeast cell walls and supports the fish's immune response. **Actigen®** furthermore optimizes growth in fish.

BIO-MOS®

Improves intestinal function

BIOPLEX®

Improves performance

BIOPLEX®

is a crucial element in our new premix. **BIOPLEX®** are organically bound trace elements such as zinc, copper, manganese & iron. With **BIOPLEX®** we can improve the health, growth & performance of the fish.

Break with tradition and feed your animals the modern way. Alltech has proven that chelated trace minerals in the form of Bioplex® and Sel-Plex® can be included at significantly lower levels while improving animal performance. This optimizes animal mineral requirements and reduces negative environmental impacts. We call this innovation Alltech's Total Replacement Technology™ (TRT).

ACTIGEN®

Helps maintain the immune system

TOTAL REPLACEMENT TECHNOLOGY™

AQUATE™

Vital Plus

ADDED VALUE PACKAGE

Altech® FENNOAQUA

The Vital Plus added value package contains, in addition to the ingredients of the Vital package, i.e. Aquate, the high vitamin C and E content and the Top3 well-being package, short and medium organic acids and natural oils.



The innovative Aquate premix

- Supports the immune response.
- Optimizes the functioning of the digestive tract by lengthening the intestinal villi. As a result, the fish grows better.
- Improves the function of the fish's mucus layer.



Short and medium organic acids and natural oils to improve resistance

- The resistance of the fish's mucus layer improves and the penetration of surface parasites through the fish's skin becomes more difficult.
- The walls of the fish's digestive tract become stronger and the possibility of parasites attacking the fish to infect the fish decreases.



Vitamin C and E concentrations higher than normal growing feeds

- Both vitamins are effective antioxidants.
- Fat-soluble vitamin E is stored in cell membranes, where it protects cells from oxidation.
- Water-soluble vitamin C protects the cell from oxidation inside the cell (cytoplasm).
- Vitamin C enhances the utilization of vitamin E by regenerating already oxidized vitamin E.
- Both vitamins stimulate the fish's immune system.



Top3 wellness package

- Enhances the antimicrobial effect of organic acids and the effect of phytochemicals against gram-negative bacteria.
- Reduces the fish's risk of falling ill with common bacterial diseases caused by gram-negative bacteria.
- Improves growth and maximizes returns.

The ingredients contained in the package work as follows:

- Permeabilizer opens the cell wall of gram-negative bacteria, allowing the active ingredients to enter the bacterial cell.
- The organic acid enters the bacterial cell through the opening opened by the Permeabilizer and destabilizes the cell's normal pH by lowering it.
- Cinnamon oil prevents the division of bacteria.

Baltic

LOW PHOSPHORUS FEED

Highly efficient feed with high protein content. The low phosphorus content enables e.g. with the use of the phytase enzyme, which improves the fish's ability to utilize phosphorus and otherwise poorly digestible plant sources of phosphorus.

Alltech[®]FENNOAQUA

0,6%

Phosphorus content

Enables high feed utilization with the phosphorus quota specified in the breeding permit

6,32%

Nitrogen value

Opti

FEEDING CONCEPT

The Opti Feeding Concept is designed for optimizing fatty acids in fish.

Alltech[®]FENNOAQUA



In Alltech Fennoaqua's Opti Feeding Concept, fish oil is largely replaced by **rapeseed oil** in the initial stage of feeding. This significantly saves the valuable fish resources of the seas and is cost-effective for the grower.



Feed with a higher fish oil content is only used in the final stage of fish farming. This ensures that enough **omega-3 fatty acids, EPA and DHA**, which promote human cardiovascular health, accumulate in the edible fish. Opti guarantees consumers a top quality and tested healthy end product.

Opti feeding produces fish with optimised fatty acids

Early growth stage

More rapeseed oil in the feed



HERCULES

EPA and DHA fatty acids retained

Feed
change

The last 500 grams

More fish oil in the feed



**HERCULES
BALTIC OPTI**

EPA and DHA in the fish increase

Omega

NITROGEN AND FATTY
ACID OPTIMISED FEED

Altech[®]FENNOAQUA

For farmers who want to ensure sufficient fatty acid levels, but do not want to change feed during the season to optimize EPA and DHA levels

6,00%

Nitrogen value

Lower nitrogen level than
Baltic series

0,65%

Phosphorus content

Hercules EX / EXR / EXR WE feeds – Rainbow trout

Hercules EX – High quality feed with excellent performance

- Good growth
- High in protein (nutritional content: protein 40 %, fat 30 %)
- High quality, closely monitored ingredients guarantee the high digestibility of nutrients
- Premium astaxanthine level according on demand

Hercules EXR – High performance feed ideal for RAS farming

- The focus on good water quality and optimal fish growth
- Closely monitored ingredients guarantee premium digestibility of nutrients with minimum discharge
- A special RAS package includes antimicrobial additive (TOP3), high vitamin C and functional dietary fibre
- Antimicrobial substance and vitamin supplement improve fish robustness
- Fiber solidifies faeces and uneaten feed
- Makes the feed more durable and makes faeces easier to collect and filter

Hercules EXR WE – RAS feed for low water temperature

- In addition to the advantages and ingredients of Hercules EXR optimized fat composition for digestion in low temperatures
- Increased level of high-quality fish meal to support growth upon periods of restrained fish metabolism
- Works perfectly in low water temperatures 2–6 °C

Ova broodstock feeds

Rainbow trout, salmon, whitefish, trout

Altech[®] FENNOAQUA



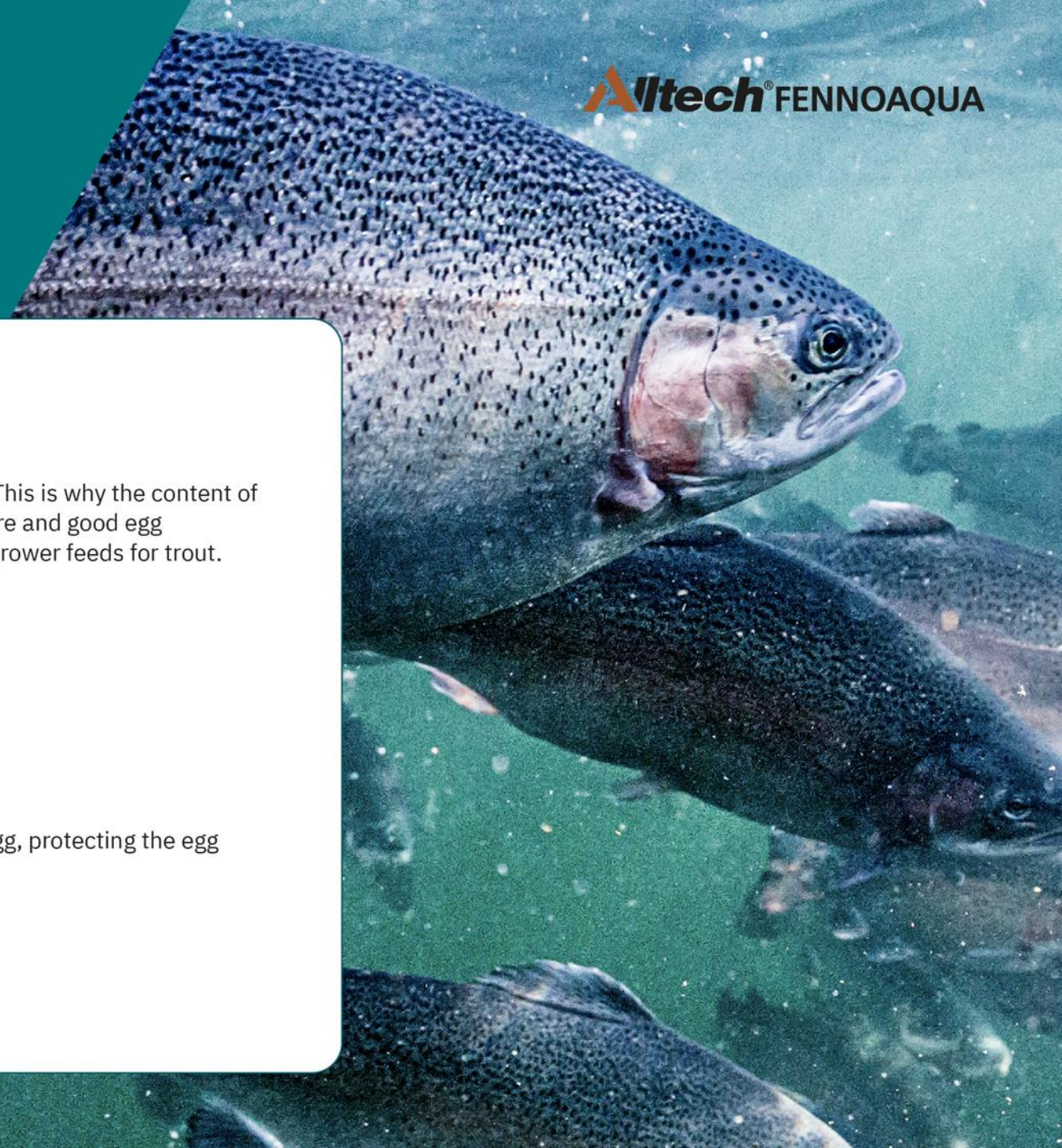
OVA

Grower feed for broodstock

The entire farming process starts with the broodstock. This is why the content of our Ova feeds is designed to promote broodstock welfare and good egg production. Ova feeds have also proven to be superior grower feeds for trout.

Optimal nutrition for fish welfare and egg development

- Ova feeds contain large amounts of fish meal and fish oil
- Excellent digestibility and the benefits of fish-based raw materials for eggs
- The ideal fatty acid composition is transferred to the eggs
- Very high astaxanthin content, which is transferred from the parent to the egg, protecting the egg
- Includes the Vital added value package for maximising fish welfare
- A superior grower feed for trout as well



Starter feeds Advance and Top

Manufacturer: Alltech Coppens

Alltech[®] FENNOAQUA

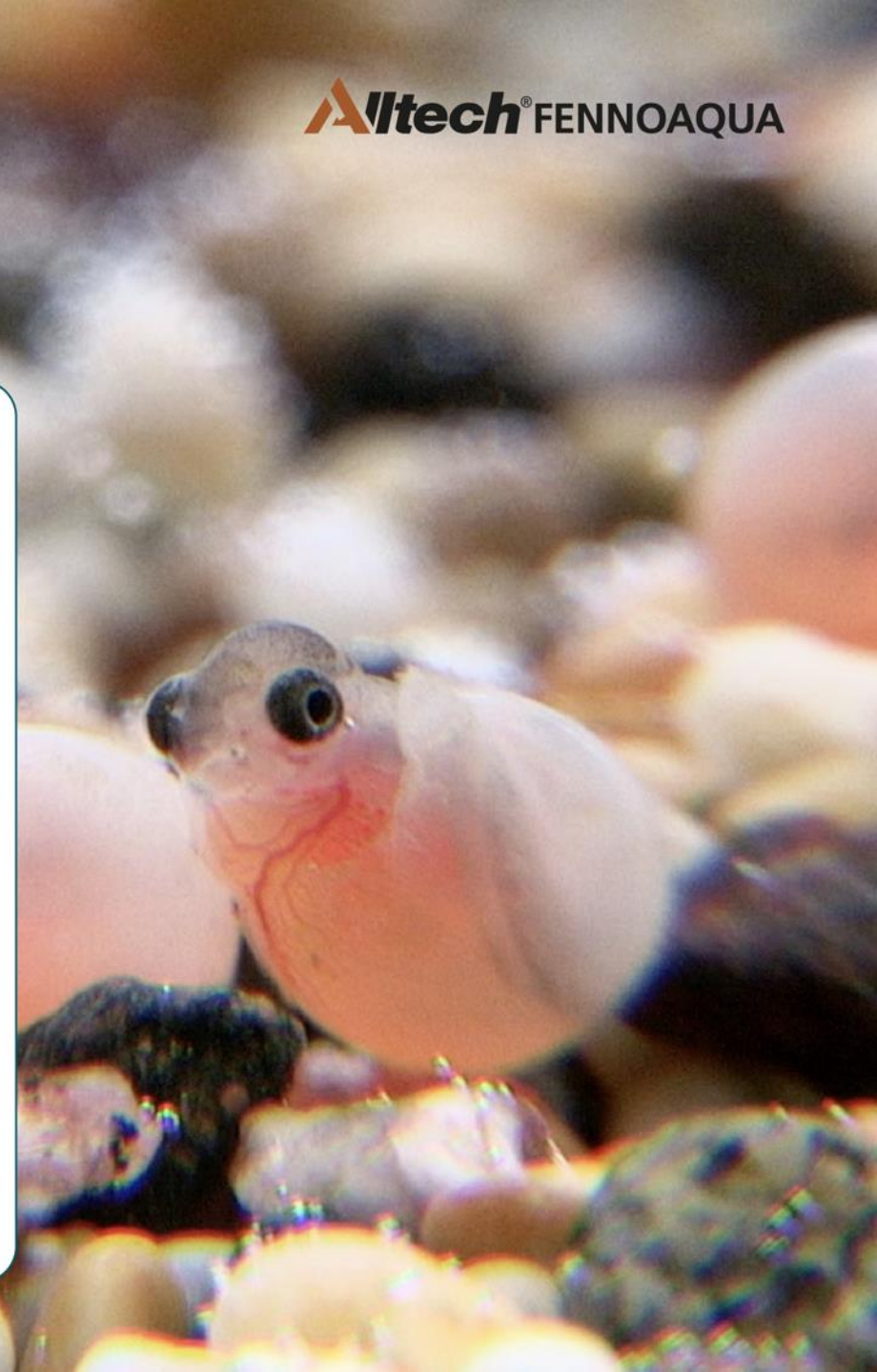
Efficient starter feeding in both traditional and RAS farming

The Advance and Top feeds work in both traditional and RAS farming. Use of the very fine Advance feed, with a pellet size of 0,2–0,3 mm, is necessary when the eggs were small. Even in such cases, the feed is only intended to be used for a few days to habituate the fish.

In normal conditions, starter feeding of rainbow trout can be started with feed with a pellet size of 0,3–0,5 mm. The smallest pellet size produced by Fennoaqua is 1,2 mm. You can transition from starter feeds to this Hercules Vital Plus feed when the fish reach roughly 4–5 grams in size.

Practical experiences of starter feeds during first years:

- Based on studies, the protein-fat ratio is optimal for muscle growth and energy needs
- Fish growth is excellent and holds up in comparison to other similar feeds
- Growth is achieved with a low feed factor
- Excellent fish welfare
- The feeds have good buoyancy characteristics
- The feeds spread very well across the basin surface
- Basins remain clean



Circuit feeds

Specific characteristics of RAS farming



Continuously optimal growth conditions – more protein required

- Boosted by digestible, high-quality protein raw materials
- Boosted by the right amino acid composition



High density – high immunity required

- Supporting fish welfare at high farming densities
- Automatically supplied with the Vital added value package



Water quality as the focus – clean water and functional biofilters required

- Special dietary fibre modifies the faeces and increases the water stability of feeds
- Highly digestible raw materials

Circuit feeds

Key characteristics of Circuit feeds



Protein

- High protein content improves the rapid growth of fish. High-quality protein ensures excellent digestibility.



Amino acid composition

- Meets the nutritional needs of each species and supports the rapid growth of fish.



Vital added value package

- Aquate, high vitamin C and E content and the TOP3 welfare package support fish welfare and immunity.



Fat

- Reducing the fat content of the feed prevents excess fat deposition and improves product quality.



Special dietary fibre

- Solidifies the faeces and waste feed.

Our feeds meet
the requirements
of the ASC
Freshwater Trout
Standard.



CIRCUIT

Rainbow trout feed selection 2025

Starter feeds (Alltech Coppens)

Advance 0,2 - 0,3
Top 0,3 - 0,5
Top 0,5 - 0,8
Top 1

Grower feeds (incl. fry feeds)

Hercules Vital Plus 1,2
Hercules Vital Plus 1,7
Hercules Vital Plus 2,5

Hercules Vital 3,5 20
Hercules Vital 5 50
Hercules Vital 7 80

Hercules Baltic 3,5 20
Hercules Baltic 5 50
Hercules Baltic 7 50
Hercules Baltic 7 80
Hercules Baltic Opti 7 80

Hercules Omega 7 50
Hercules Omega 7 80

Hercules EX 3,5
Hercules EX 5
Hercules EX 7

Broodstock feeds

Ova Vital 2,5
Ova Vital 3,5
Ova Vital 5
Ova Vital 7
Ova Vital 9

RAS feeds

Circuit Vital 1,2
Circuit Vital 1,7
Circuit Crystal 2,0
Circuit Crystal Astax 3,0
Circuit Crystal Astax 4,5
Circuit Crystal Astax 6,0

Hercules EXR 3,5
Hercules EXR 5
Hercules EXR 7

Hercules EXR 3,5 WE
Hercules EXR 5 WE
Hercules EXR 7 WE

Feed recommendations according to fish size

Advance and Top

- Starter feeds that are proven to work well

Hercules Vital Plus

- Fry feeds that improve the immune systems of fish

Hercules Vital

- For when you want to ensure the good general condition of your fish in all conditions and maximise the results

Hercules Baltic

- The low phosphorus content enables high feed utilization with the phosphorus quota specified in the feeding permit
- Choose Baltic Opti when you want to optimise the fatty acids in fish

Hercules EX / EXR / EXR WE

- For when you want a low FCR and to maximise growth
- For when health-promoting additives are not required to maintain the general condition of the fish

Ova

- Top feed for broodstock and trout

Fish size (g):	0,1–0,15	0,15–1	0,8–3	2–4	4–15	15–30	25–70	60–125	110–500	450–
Advance / Top *	0,2–0,3 mm	0,3–0,5 mm	0,5–0,8 mm	1 mm						
Hercules Vital Plus					1,2 mm	1,7 mm	2,5 mm			
Hercules Vital								3,5 mm	5 mm	7 mm
Hercules								3,5 mm	5 mm	
Hercules Baltic									5 mm	7 mm
Hercules Baltic Opti **										7 mm
Hercules EX / EXR / EXR WE								3,5 mm	5 mm	7 mm
Ova ***							2,5 mm	3,5 mm	5 mm	7 mm

*Manufacturer Alltech Coppens **The last 500 grams of additional growth ***Also suitable for trout

Product information

Starter feeds (Alltech Coppens)

Product	RP %	RF %	P %	Fiber %	Digestible energy MJ/kg
Advance 0,2-0,3	56	15	1,77	0,3	19,2
Top 0,3-0,5	63	17	1,70	0,3	19,8
Top 0,5-0,8	62	18	1,64	0,3	20,5
Top 1	58	20	1,74	0,2	20,8

Product information

Grower feeds (incl. fry feeds) – rainbow trout

Product	RP %	RF %	P %	N %	Asta mg	Vitamins C/E mg	Digestible energy MJ/kg
Hercules Vital Plus 1,2	53	18	1,10	8,48	5	800/450	20,5
Hercules Vital Plus 1,7	48	24	1,10	7,68	5	800/450	21,6
Hercules Vital Plus 2,5	46	26	0,95	7,36	5	800/450	21,9
Hercules Vital 3,5 20	43	28	0,90	6,88	20	800/450	22,0
Hercules Vital 5 50	40	30	0,65	6,40	50	800/450	22,3
Hercules Vital 7 80	39,5	32	0,60	6,32	80	800/450	22,7
Hercules Baltic 3,5 20	43	28	0,90	6,88	20	500/300	22,3
Hercules Baltic 5 50	40	30	0,65	6,40	50	500/300	22,7
Hercules Baltic 7 50	39,5	32	0,60	6,32	50	500/300	22,9
Hercules Baltic 7 80	39,5	32	0,60	6,32	80	500/300	22,9
Hercules Baltic Opti 7 80	39,5	32	0,60	6,32	80	500/300	22,9
Hercules Omega 7 50	37,5	33	0,65	6,00	50	500/300	23,2
Hercules Omega 7 80	37,5	33	0,65	6,00	80	500/300	23,2

Product information

Grower feeds EX (incl. fry feeds) - rainbow trout

Product	RP %	RF %	P %	N %	Asta mg	Vitamins C/E mg	Digestible energy MJ/kg
Hercules Vital Plus 1,2	53	18	1,10	8,48	5	800/450	20,5
Hercules Vital Plus 1,7	48	24	1,10	7,68	5	800/450	21,6
Hercules Vital Plus 2,5	46	26	0,95	7,36	5	800/450	21,9
Hercules 3,5 EX 0	43	29	0,90	6,88	0	350/250	22,3
Hercules 3,5 EX 5	43	29	0,90	6,88	5	350/250	22,3
Hercules 5 EX 0	40	30	0,90	6,40	0	350/250	22,2
Hercules 5 EX 5	40	30	0,90	6,40	5	350/250	22,3
Hercules 5 EX 60	40	30	0,90	6,40	60	350/250	22,2
Hercules 5 EX 80	40	30	0,90	6,40	80	350/250	22,3
Hercules 7 EX 60	40	30	0,90	6,40	60	350/250	22,3
Hercules 7 EX 80	40	30	0,90	6,40	80	350/250	22,3

Product information

Broodstock feeds

Product	RP %	RF %	P %	N %	Asta mg	Vitamins C/E mg	Digestible energy MJ/kg
Ova Vital 2,5	46	24	0,95	7,36	80	800/450	21,5
Ova Vital 3,5	43	26	0,90	6,88	80	800/450	21,4
Ova Vital 5 / 7 / 9	41	30	0,80	6,56	80	800/450	22,4

Product information

Circuit RAS feeds - rainbow trout

Product	RP %	RF %	P %	N %	Asta mg	Vitamins C/E mg	Digestible energy MJ/kg
Circuit Vital 1,2	53	18	1,15	8,48	5	800/450	20,4
Circuit Vital 1,7	49	22	1,1	7,84	5	800/450	20,9
Circuit Crystal 2,0	48	24	1,00	7,68	5	500/300	21,5
Circuit Crystal Astax 3,0	46	26	0,95	7,36	40	500/300	21,8
Circuit Crystal Astax 4,5	43	28	0,90	6,88	80	500/300	22,0
Circuit Crystal Astax 6,0	43	28	0,90	6,88	80	500/300	22,0

Product information

Hercules EXR /EXR WE RAS feeds -rainbow trout

Product	RP %	RF %	P %	N %	Asta mg	Vitamins C/E mg	Digestible energy MJ/kg
Hercules 3,5 EXR 0	43	29	0,90	6,88	0	500/300	22,4
Hercules 3,5 EXR 0 WE	43	29	0,90	6,88	0	500/300	22,3
Hercules 3,5 EXR 5	43	29	0,90	6,88	5	500/300	22,3
Hercules 3,5 EXR 5 WE	43	29	0,90	6,88	5	500/300	22,2
Hercules 5 EXR 0	40	30	0,80	6,40	0	500/300	22,2
Hercules 5 EXR 0 WE	40	30	0,80	6,40	0	500/300	22,3
Hercules 5 EXR 5	40	30	0,90	6,40	5	500/300	22,2
Hercules 5 EXR 5 WE	40	30	0,80	6,40	5	500/300	22,2
Hercules 5 EXR 60	40	30	0,90	6,40	60	500/300	22,2
Hercules 5 EXR 80 WE	40	30	0,80	6,40	80	500/300	22,4
Hercules 7 EXR 60	40	30	0,90	6,40	60	500/300	22,2
Hercules 7 EXR 80	40	30	0,90	6,40	80	500/300	22,2
Hercules 7 EXR 80 WE	40	30	0,80	6,40	80	500/300	22,3

Whitefish feed recommendations according to fish size

Advance and Top

- Starter feeds that are proven to work well even for whitefish, which have a large size range.

Hercules Vital Plus

- Fry feed that promotes fish well-being, including an additive that prevents parasitic infections.
- Excellent growth results thanks to better general condition of the fish

Silver Vital Opti

- Feeds specially developed for the nutritional needs of whitefish
- Ensures the well-being of the fish in all situations and maximizes growth results

Ova Vital

- Top feed for broodstock
- Vital health package that promotes well-being included in all feed sizes

Fish size (g):	0,4–0,75	0,7–2	2–8	8–12	12–25	25–85	80–210	200–600	550–
Advance/Top*	0,2–0,3 mm	0,3–0,5 mm	0,5–0,8 mm	1 mm					
Hercules Vital Plus					1,2 mm				
Silver Vital Opti						1,7 mm	2,5 mm	3,5 mm	5 mm
Ova Vital**									5–7 mm

* Manufacturer Alltech Coppens

** For broodstock

Product information

Whitefish feeds

Product	RP %	RF %	P %	N %	Vitamins C/E mg	Digestible energy MJ/kg
Hercules Vital Plus 1,2	53	18	1,10	8,48	800/450	20,5
Silver Vital Opti 1,7	49	16	0,95	7,84	800/450	19,5
Silver Vital Opti 2,5	48	17	0,85	7,68	800/450	19,7
Silver Vital Opti 3,5 / 5	45	18	0,80	7,20	800/450	19,6

Product information

RAS feeds – whitefish

Product	RP %	RF %	P %	N %	Vitamins C/E mg	Digestible energy MJ/kg
Circuit Vital 1,2	53	18	1,15	8,48	800/450	20,4
Circuit Vital 1,7	49	22	1,10	7,84	800/450	20,9
Circuit Silver Opti 2,5	48	17	0,90	7,68	1000/450	19,6
Circuit Silver Opti 3,5 / 5	47	18	0,80	7,52	1000/450	20,0

